

Drums

# SUITE for BAND

## I

Chris Brown

q. = 120

**A**

22

8

Musical staff for section A, measures 1-30, in 6/8 time.

Musical staff for section A, measures 1-5, starting with a forte (f) dynamic.

Musical staff for section A, measures 6-10, ending with a first ending bracket.

**B**

**C**

**D**

16

16

14

Musical staff for section A, measures 11-30, divided into sections B, C, and D.

Musical staff for section A, measures 1-5, with dynamics mf, cresc., and f.

Musical staff for section A, measures 6-10, with accents.

**E**

10

Musical staff for section A, measures 11-20, ending with a repeat sign.

q = 104

**F**

22

26

Musical staff for section F, measures 1-48, in common time.

q. = 120

Musical staff for section F, measures 1-5, starting with a forte (f) dynamic.

Musical staff for section F, measures 6-10, with first and second endings.

**G**

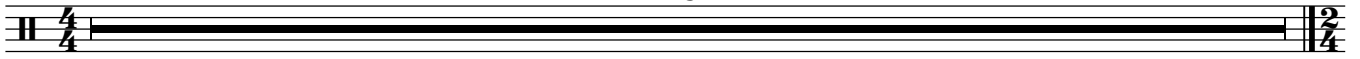
24

Musical staff for section G, measures 1-24, in 4/4 time.

# II

2 q = 84

TACET

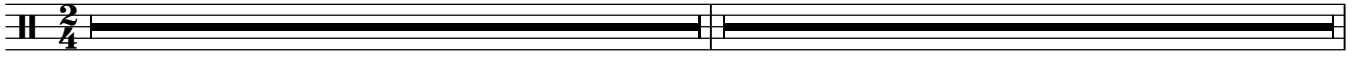


q = 144

**M**

29

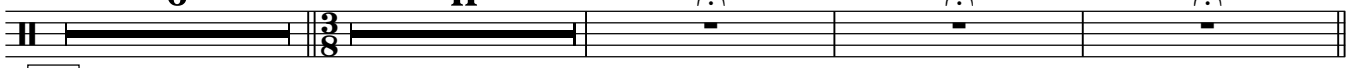
8



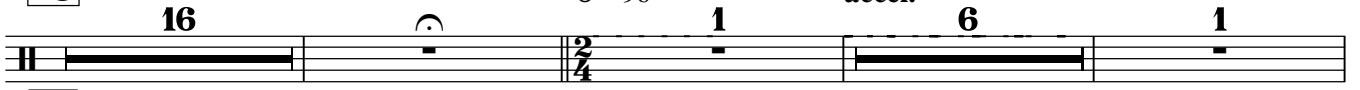
**N** 27 **O** 8



**P** 6 11



**Q** 16 e = 96 accel. 1 6 1



**R** q = 144 5



**S**



9 **T** 1

